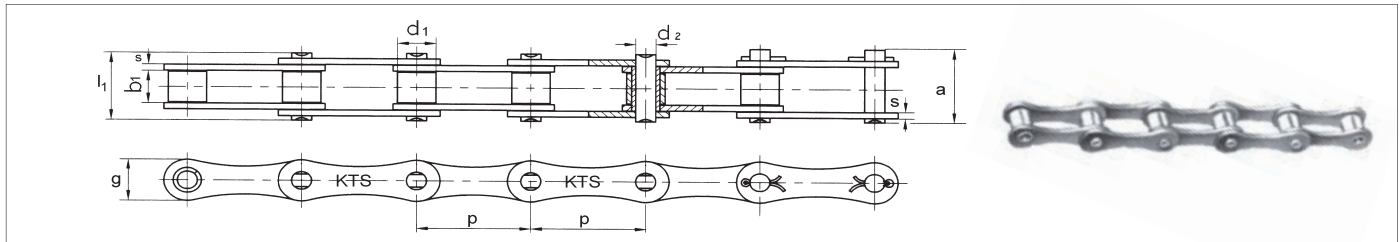
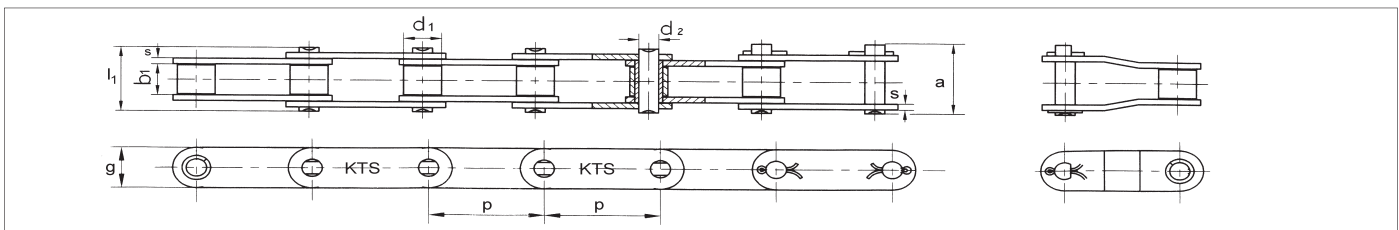


Landmaschinen-Rollenketten



Ketten-Nr.	Teilung p mm	lichte Weite Innenglied b ₁ mm min.	Rollen- durchm. d ₁ mm max.	Bolzen- durchm. d ₂ mm max.	Laschen- höhe g mm max.	Laschen- dicke s mm max.	Bolzen- länge l ₁ mm max.	a mm max.	Bruchkraft	Bruchkraft	Gewicht q kg/m ca.
									standard FB kN min.	Ø erreicht kN	
S32	29,210	15,88	11,43	4,45	13,2	1,8	26,7	28,8	8,00	9,20	0,86
S42	34,930	19,05	14,27	7,00	19,8	2,8	34,3	37,0	27,00	31,00	1,60
S45	41,400	22,23	15,24	5,72	17,3	2,8	37,7	40,4	18,00	20,70	1,66
S52	38,100	22,23	15,24	5,72	17,3	2,8	37,7	40,4	18,00	20,70	1,68
S55	41,400	22,23	17,78	5,72	17,3	2,8	37,7	40,4	18,00	20,70	1,80
S55R	41,400	22,23	17,78	8,90	22,4	3,5	41,0	44,0	45,00	51,80	2,49
S62	41,910	25,40	19,05	5,72	17,3	2,5	40,3	43,0	27,00	31,00	1,87
S77	58,340	22,23	18,26	8,90	26,2	4,0	43,2	46,4	45,00	51,80	2,65
S88	66,270	28,58	22,86	8,90	26,2	4,0	49,8	53,0	45,00	51,80	3,25
CA650	50,800	27,80	25,00	9,53	25,0	4,0	40,4	44,7	80,00	92,00	3,49

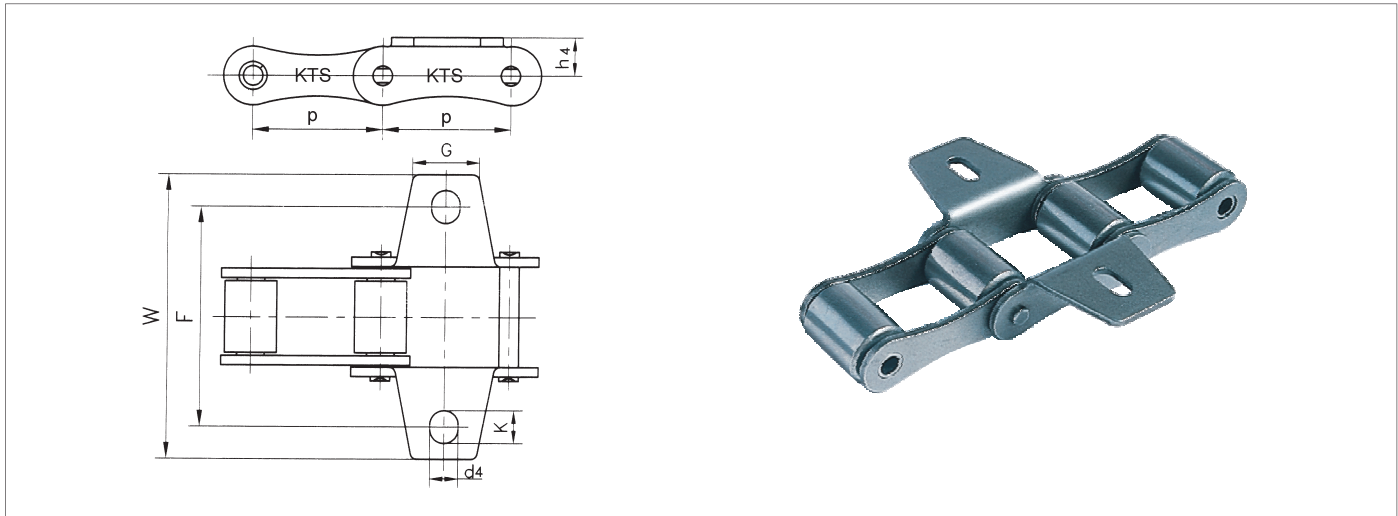
a) Bolzenlänge Verschlussglied



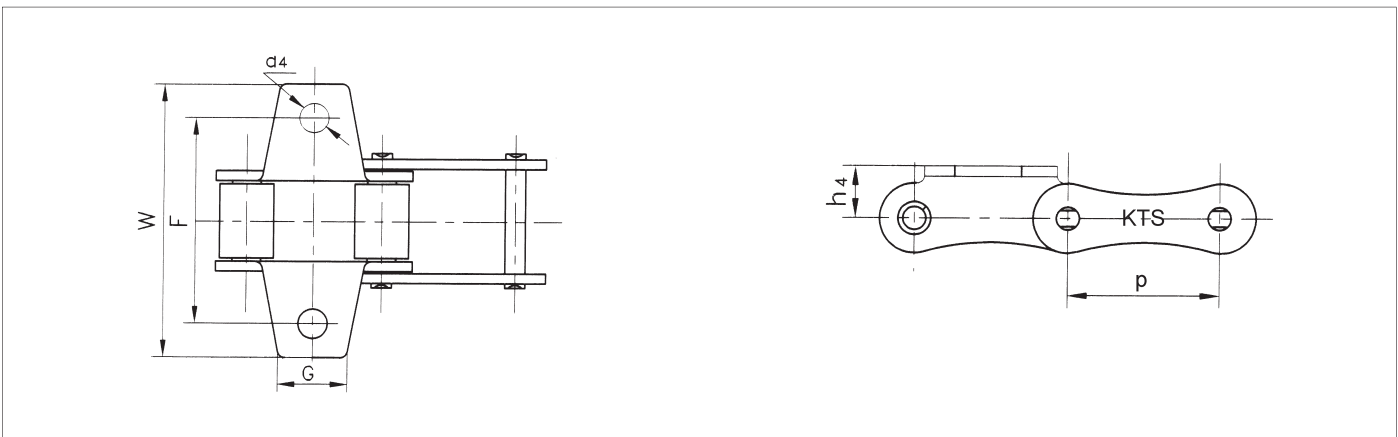
Ketten-Nr.	Teilung p mm	lichte Weite Innenglied b ₁ mm min.	Rollen- durchm. d ₁ mm max.	Bolzen- durchm. d ₂ mm max.	Laschen- höhe g mm max.	Laschen- dicke s mm max.	Bolzen- länge l ₁ mm max.	a mm max.	Bruchkraft	Bruchkraft	Gewicht q kg/m ca.
									standard FB kN min.	Ø erreicht kN	
CA550	41,400	19,81	16,87	7,19	19,3	2,8	35,0	38,0	39,10	45,00	1,94
CA555	41,400	12,70	16,87	7,19	19,3	3,1	29,7	33,1	39,10	45,00	1,83
CA557	41,400	20,24	17,78	8,00	23,1	3,1	37,4	40,6	55,61	64,00	2,20
CA620	42,010	24,51	17,91	7,19	20,2	3,3	41,8	45,2	39,10	45,00	2,35
CA2060H	38,100	12,70	11,91	5,94	17,5	3,3	29,7	31,7	31,28	36,00	1,50
CA2063H	38,100	12,70	11,89	5,94	19,3	3,3	29,4	34,2	31,28	36,00	1,65

a) Bolzenlänge Verschlussglied

Winkellaschen für Landmaschinenrollenketten



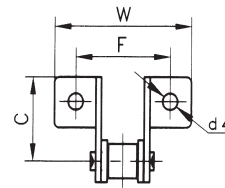
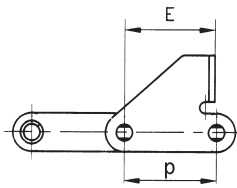
Ketten-Nr.	p mm	G mm	F mm	W mm	h4 mm	d4 mm	K mm
S42K ₁	34,930	17,5	54,0	74,9	14,0	8,3	11,5
S52K ₁	38,100	19,0	58,8	78,0	11,4	8,3	9,9
S62K ₁	41,910	22,0	66,8	95,4	11,4	6,5	13,0
S62F ₂	41,910	22,0	66,8	95,4	11,4	8,3	14,7



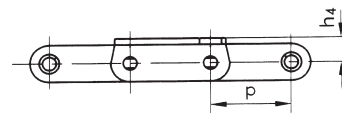
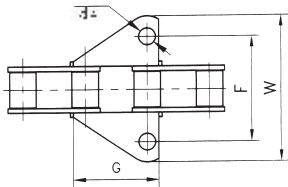
Ketten-Nr.	p mm	G mm	F mm	W mm	h4 mm	d4 mm	K mm
S32K ₁	29,210	15,0	42,9	61,0	8,6	5,3	6,9
S55K ₁	41,400	22,0	54,0	75,0	11,4	8,5	11,7

Ketten-Nr.	p mm	G mm	F mm	W mm	h4 mm	d4 mm
S52F5	38,100	19,0	51,2	71,7	16,5	8,3

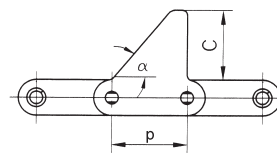
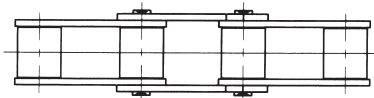
Winkellaschen und Mitnehmer für Landmaschinenrollenkettens



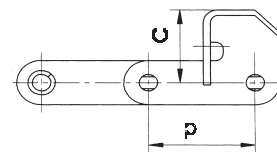
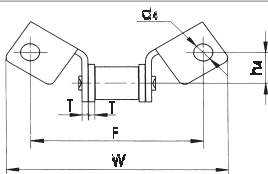
Ketten-Nr.	p mm	C mm	F mm	W mm	E mm	d ₄ mm
S52F ₃	38,400	35,25	52,0	73,0	37,4	8,7
CA550SD	41,400	42,90	47,6	68,2	36,9	8,7



Ketten-Nr.	p mm	G mm	F mm	W mm	h ₄ mm	d ₄ mm
CA557F ₁	41,400	60,0	53,94	76,2	14,6	9,9



Ketten-Nr.	p mm	C mm	α °
S62F ₁	41,910	50,0	50

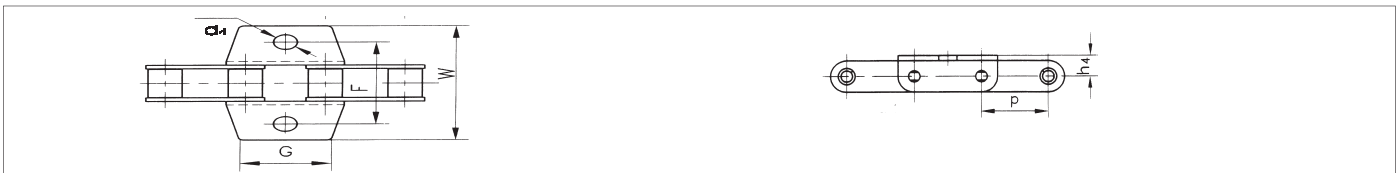


Ketten-Nr.	p mm	T mm	C mm	F mm	W mm	h ₄ mm	d ₄ mm
CA550-F14	41,400	2,8	31,75	79,4	101,6	15,9	8,33

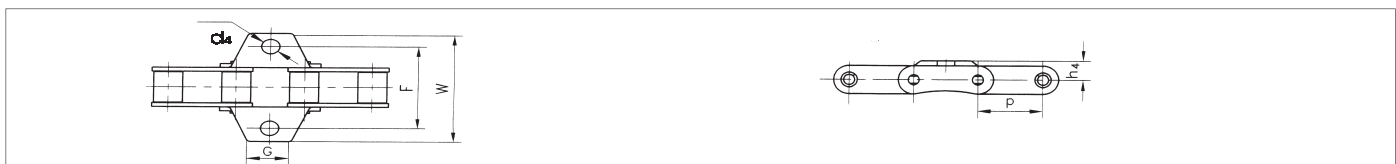
Winkellaschen und Mitnehmer für Landmaschinenrollenketten



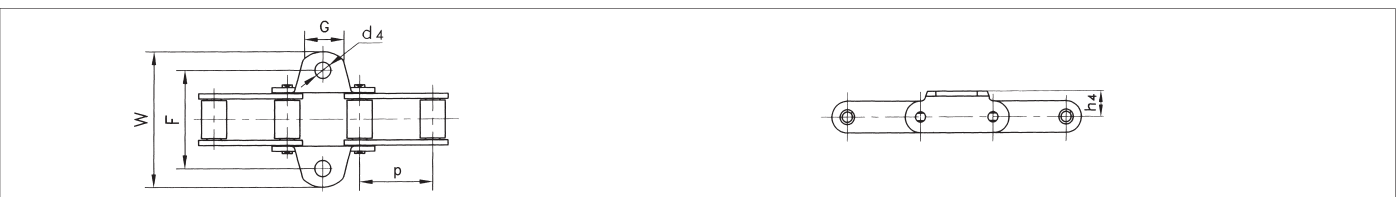
Ketten-Nr.	p mm	G mm	F mm	W mm	h ₄ mm	d ₄ mm	K mm
S52F ₁	38,400	23,0	57,5	80,0	16,0	8,7	8,7
CA557K ₁	41,400	22,0	50,8	72,0	15,9	8,7	8,7
CA550K ₁	41,400	22,0	52,5	76,2	12,7	8,3	10,0



Ketten-Nr.	p mm	G mm	F mm	W mm	h ₄ mm	d ₄ mm
S52F ₂	38,400	39,0	57,0	80,0	16,0	10,5

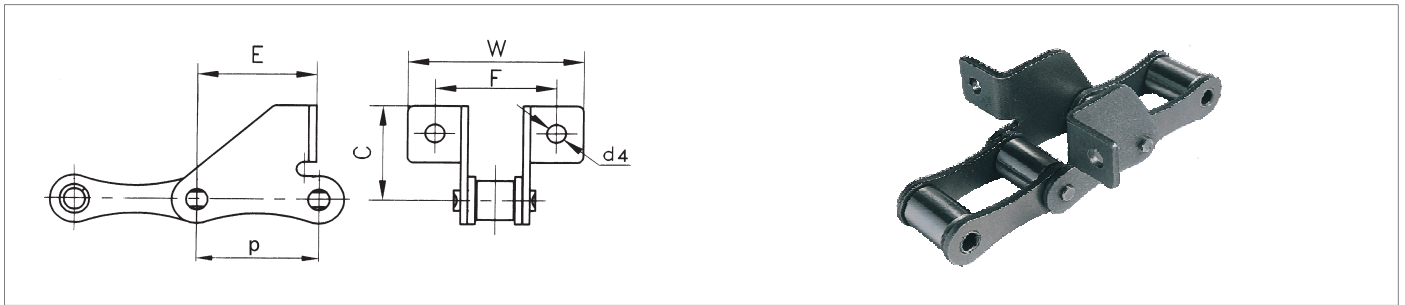


Ketten-Nr.	p mm	G mm	F mm	W mm	h ₄ mm	d ₄ mm
CA550F ₁	41,100	22,23	53,95	70,6	12,7	9,9

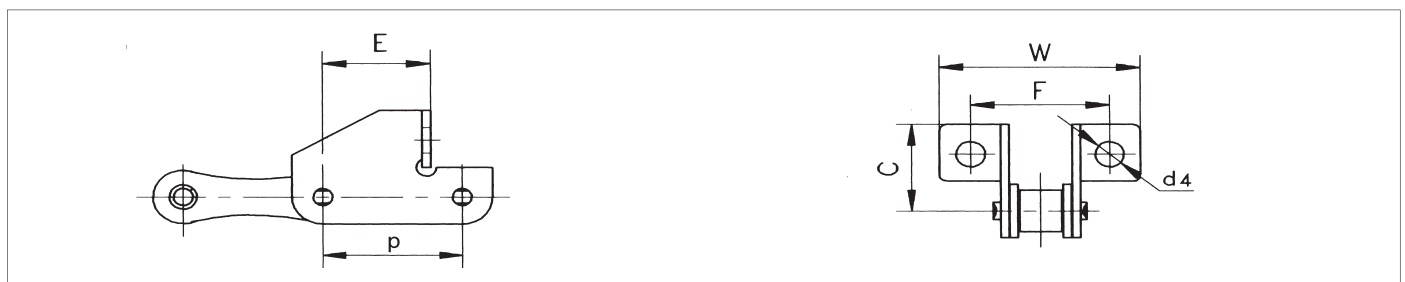


Ketten-Nr.	p mm	G mm	F mm	W mm	h ₄ mm	d ₄ mm
CA550F ₂	41,400	22,0	50,8	72,0	14,7	8,5

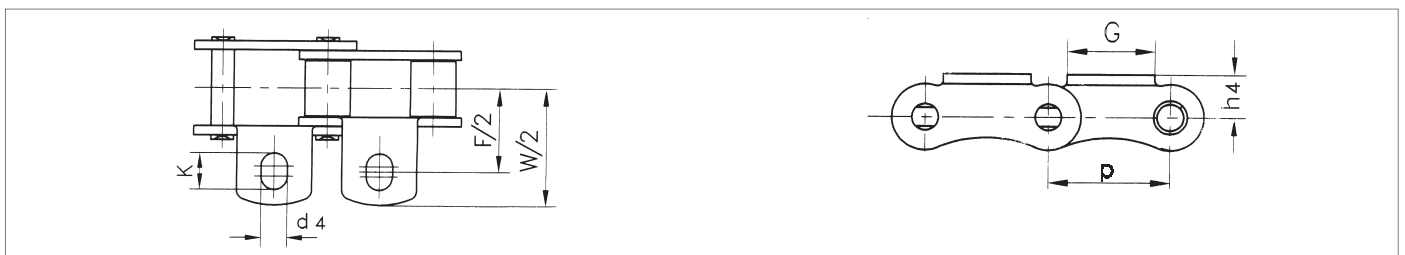
Winkelaschen und Mitnehmer für Landmaschinenrollenkettens



Ketten-Nr.	p mm	E mm	F mm	W mm	C mm	d ₄ mm
S52F ₄	38,100	37,0	53,8	69,5	29,4	6,4
S55F ₂	41,400	37,0	58,0	87,0	30,0	6,4
S55F ₃	41,400	33,2	58,0	85,6	32,0	6,6
S55F ₄	41,400	37,0	58,0	87,0	32,0	6,6



Ketten-Nr.	p mm	E mm	F mm	W mm	C mm	d ₄ mm
S45V	41,400	28,5	62,4	83,4	33,75	8,8
S55V	41,400	28,5	57,5	83,4	33,75	6,5
S55F ₁	41,400	31,9	62,0	89,2	29,00	8,3



Ketten-Nr.	p mm	G mm	F mm	W mm	h ₄ mm	d ₄ mm	K mm
S55RK ₁	41,400	25,0	63,6	90,4	15,5	8,6	12,0