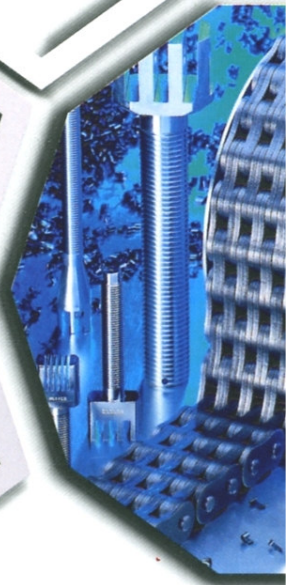
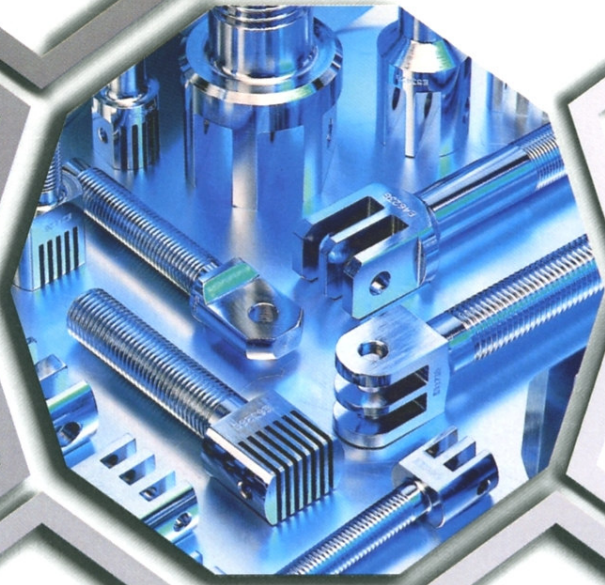




LEAF CHAIN





| Chain Number | Lacing | Lacing Style | Pin Diameter mm (max) | Plate Thickness mm (max) | Plate Depth mm (max) | Pin Length mm (max) | Breaking Strength (kg) | Breaking Strength (kN) |
|------------------------------|---------|--------------|-----------------------|--------------------------|----------------------|---------------------|------------------------|------------------------|
| 1/2" Pitch (12.7mm) | | | | | | | | |
| AL0422 | 2 x 2 | 11 | 3.96 | 1.57 | 10.40 | 8.40 | 1700 | 16.67 |
| BL0422 | 2 x 2 | 11 | 5.08 | 2.08 | 12.00 | 10.80 | 2500 | 24.52 |
| EL0422 | 2 x 2 | 11 | 4.45 | 1.62 | 10.90 | 8.90 | 1835 | 18.00 |
| BL0423 | 2 x 3 | 1 | 5.08 | 2.08 | 12.00 | 13.00 | 2500 | 24.52 |
| BL0434 | 3 x 4 | 3 | 5.08 | 2.08 | 12.00 | 17.20 | 3750 | 36.78 |
| AL0444 | 4 x 4 | 12 | 3.96 | 1.57 | 10.40 | 14.80 | 3400 | 33.34 |
| BL0444 | 4 x 4 | 12 | 5.08 | 2.08 | 12.00 | 19.30 | 5000 | 49.04 |
| EL0444 | 4 x 4 | 12 | 4.45 | 1.62 | 10.90 | 15.80 | 3670 | 36.00 |
| BL0446 | 4 x 6 | 5 | 5.08 | 2.08 | 12.00 | 23.60 | 5000 | 49.04 |
| AL0466 | 6 x 6 | 13 | 3.96 | 1.57 | 10.40 | 21.20 | 5100 | 50.01 |
| BL0466 | 6 x 6 | 13 | 5.08 | 2.08 | 12.00 | 27.80 | 7500 | 73.56 |
| EL0466 | 6 x 6 | 13 | 4.45 | 1.62 | 10.90 | 22.50 | 5505 | 54.00 |
| AL0488 | 8 x 8 | 14 | 3.96 | 1.57 | 10.40 | 27.60 | 6800 | 66.68 |
| BL0488 | 8 x 8 | 14 | 5.08 | 2.08 | 12.00 | 35.60 | 10000 | 98.08 |
| EL0488 | 8 x 8 | 14 | 4.45 | 1.62 | 10.90 | 29.10 | 7340 | 72.00 |
| 5/8" Pitch (15.875mm) | | | | | | | | |
| AL0522 | 2 x 2 | 11 | 5.08 | 2.08 | 13.00 | 10.80 | 2830 | 27.76 |
| BL0522 | 2 x 2 | 11 | 5.95 | 2.44 | 15.00 | 12.60 | 3950 | 38.75 |
| EL0522 | 2 x 2 | 11 | 5.08 | 1.62 | 13.70 | 9.20 | 2450 | 24.03 |
| BL0523 | 2 x 3 | 1 | 5.95 | 2.44 | 15.00 | 15.10 | 3950 | 38.75 |
| FLC0523 | 2 x 3 | 2 | 5.08 | 1.88 | 12.20 | 12.20 | 2350 | 23.05 |
| BL0534 | 3 x 4 | 3 | 5.95 | 2.44 | 15.00 | 20.30 | 5925 | 58.13 |
| FLC0534 | 3 x 4 | 4 | 5.08 | 1.88 | 12.20 | 16.20 | 3525 | 34.58 |
| AL0544 | 4 x 4 | 12 | 5.08 | 2.08 | 13.00 | 19.30 | 5660 | 55.52 |
| BL0544 | 4 x 4 | 12 | 5.95 | 2.44 | 15.00 | 22.50 | 7900 | 77.50 |
| EL0544 | 4 x 4 | 12 | 5.08 | 1.62 | 13.70 | 16.10 | 4900 | 48.06 |
| FLC0545 | 4 x 5 | 6 | 5.08 | 1.88 | 12.20 | 20.10 | 4700 | 46.10 |
| BL0546 | 4 x 6 | 5 | 5.95 | 2.44 | 15.00 | 27.50 | 7900 | 77.50 |
| FLC0556 | 5 x 6 | 7 | 5.08 | 1.88 | 12.20 | 24.10 | 5875 | 57.63 |
| AL0566 | 6 x 6 | 13 | 5.08 | 2.08 | 13.00 | 27.80 | 8490 | 83.28 |
| BL0566 | 6 x 6 | 13 | 5.95 | 2.44 | 15.00 | 32.40 | 11850 | 116.25 |
| EL0566 | 6 x 6 | 13 | 5.08 | 1.62 | 13.70 | 22.80 | 7350 | 72.09 |
| FLC0578 | 7 x 8 | 9 | 5.08 | 1.88 | 12.20 | 31.60 | 8225 | 80.68 |
| AL0588 | 8 x 8 | 14 | 5.08 | 2.08 | 13.00 | 36.20 | 11320 | 111.04 |
| BL0588 | 8 x 8 | 14 | 5.95 | 2.44 | 15.00 | 42.30 | 15800 | 155.00 |
| EL0588 | 8 x 8 | 14 | 5.08 | 1.62 | 13.70 | 29.60 | 9800 | 96.12 |
| 3/4" Pitch (19.05mm) | | | | | | | | |
| AL0622 | 2 x 2 | 11 | 5.95 | 2.44 | 15.30 | 12.60 | 3930 | 38.55 |
| BL0622 | 2 x 2 | 11 | 7.94 | 3.30 | 18.00 | 16.90 | 6500 | 63.76 |
| EL0622 | 2 x 2 | 11 | 5.72 | 1.88 | 16.10 | 10.50 | 3300 | 32.37 |
| BL0623 | 2 x 3 | 1 | 7.94 | 3.30 | 18.00 | 20.20 | 6500 | 63.76 |
| FLC0623 | 2 x 3 | 2 | 5.72 | 1.88 | 14.40 | 12.50 | 2900 | 28.44 |
| BL0634 | 3 x 4 | 3 | 7.94 | 3.30 | 18.00 | 26.90 | 9750 | 95.64 |
| FLC0634 | 3 x 4 | 4 | 5.72 | 1.88 | 14.40 | 16.40 | 4350 | 42.66 |
| AL0644 | 4 x 4 | 12 | 5.95 | 2.44 | 15.30 | 22.50 | 7860 | 77.10 |
| BL0644 | 4 x 4 | 12 | 7.94 | 3.30 | 18.00 | 30.30 | 13000 | 127.52 |
| EL0644 | 4 x 4 | 12 | 5.72 | 1.88 | 16.10 | 18.30 | 6600 | 64.74 |
| FLC0645 | 4 x 5 | 6 | 5.72 | 1.88 | 14.40 | 20.20 | 5800 | 56.88 |
| BL0646 | 4 x 6 | 5 | 7.94 | 3.30 | 18.00 | 37.00 | 13000 | 127.52 |
| FLC0656 | 5 x 6 | 7 | 5.72 | 1.88 | 14.40 | 24.30 | 7250 | 71.10 |
| AL0666 | 6 x 6 | 13 | 5.95 | 2.44 | 15.30 | 32.40 | 11790 | 115.65 |
| AL0666BV | 6 x 6 | 13 | 6.45 | 2.34 | 18.00 | 31.17 | 11820 | 115.95 |
| BL0666 | 6 x 6 | 13 | 7.94 | 3.30 | 18.00 | 43.70 | 19500 | 191.28 |
| EL0666 | 6 x 6 | 13 | 5.72 | 1.88 | 16.10 | 26.00 | 9900 | 97.11 |
| FLC0667 | 6 x 7 | 8 | 5.72 | 1.88 | 14.40 | 28.00 | 8700 | 85.32 |
| FLC0678 | 7 x 8 | 9 | 5.72 | 1.88 | 14.40 | 31.80 | 10150 | 99.54 |
| AL0688 | 8 x 8 | 14 | 5.95 | 2.44 | 15.30 | 42.30 | 15720 | 154.20 |
| BL0688 | 8 x 8 | 14 | 7.94 | 3.30 | 18.00 | 57.10 | 26000 | 255.04 |
| EL0688 | 8 x 8 | 14 | 5.72 | 1.88 | 16.10 | 33.80 | 13200 | 129.48 |
| FLC0689 | 8 x 9 | 10 | 5.72 | 1.88 | 14.40 | 35.70 | 11600 | 113.76 |
| FLC061011 | 10 x 11 | special | 5.72 | 1.88 | 14.40 | 43.50 | 14500 | 142.20 |
| 1" Pitch (25.4mm) | | | | | | | | |
| AL0822 | 2 x 2 | 11 | 7.94 | 3.30 | 20.80 | 16.90 | 6950 | 68.18 |
| BL0822 | 2 x 2 | 11 | 9.53 | 4.09 | 24.10 | 20.50 | 10500 | 103.00 |
| EL0822 | 2 x 2 | 11 | 8.28 | 3.20 | 21.08 | 16.90 | 7000 | 68.67 |
| BL0823 | 2 x 3 | 1 | 9.53 | 4.09 | 24.10 | 24.70 | 10500 | 103.00 |
| AN0834 | 3 x 4 | 3 | 10.90 | 3.20# | 24.13 | 29.97 | 15000 | 147.15 |
| BL0834 | 3 x 4 | 3 | 9.53 | 4.09 | 24.10 | 32.90 | 15750 | 154.50 |
| FLC0834 | 3 x 4 | 4 | 8.28 | 3.20 | 21.08 | 26.90 | 10500 | 103.00 |
| AL0844 | 4 x 4 | 12 | 7.94 | 3.30 | 20.80 | 30.30 | 13900 | 136.36 |
| BL0844 | 4 x 4 | 12 | 9.53 | 4.09 | 24.10 | 37.10 | 21000 | 206.00 |
| EL0844 | 4 x 4 | 12 | 8.28 | 3.20 | 21.08 | 29.90 | 14000 | 137.34 |
| EL0844GU | 4 x 4 | 15 | 8.28 | 3.20 | 21.08 | 52.50 | 14260 | 139.89 |
| BL0846 | 4 x 6 | 5 | 9.53 | 4.09 | 24.10 | 45.40 | 21000 | 206.00 |
| FLC0856 | 5 x 6 | 7 | 8.28 | 3.20 | 21.08 | 39.90 | 17500 | 171.67 |
| RL0856 | 5 x 6 | 7 | 9.53 | 3.23 | 23.70 | 39.40 | 21700 | 212.88 |
| AL0866 | 6 x 6 | 13 | 7.94 | 3.30 | 20.80 | 43.70 | 20850 | 204.54 |
| AN0866 | 6 x 6 | 13 | 10.90 | 3.20# | 24.13 | 46.30 | 30000 | 294.30 |
| BL0866 | 6 x 6 | 13 | 9.53 | 4.09 | 24.10 | 53.60 | 31500 | 309.00 |
| BL0866GU | 6 x 6 | 17 | 9.53 | 4.09 | 24.10 | 68.59 | 31500 | 309.00 |
| EL0866 | 6 x 6 | 13 | 8.28 | 3.20 | 21.08 | 42.90 | 21000 | 206.01 |
| EL0866GU | 6 x 6 | 16 | 8.28 | 3.20 | 21.08 | 59.54 | 18340 | 179.92 |
| FLC0867 | 6 x 7 | 8 | 8.28 | 3.20 | 21.08 | 46.40 | 21000 | 206.00 |
| FLC0878 | 7 x 8 | 9 | 8.28 | 3.20 | 21.08 | 53.00 | 24500 | 240.33 |
| BL0888 | 8 x 8 | 14 | 9.53 | 4.09 | 24.10 | 70.20 | 42000 | 412.00 |

NOTE: AN08 chains have an outer plate thickness of 4.00mm compared to inner plates of 3.20mm



| Chain Number | Lacing | Lacing Style | Pin Diameter mm (max) | Plate Thickness mm (max) | Plate Depth mm (max) | Pin Length mm (max) | Breaking Strength (kg) | Breaking Strength (kN) |
|-------------------------------|--------|--------------|-----------------------|--------------------------|----------------------|---------------------|------------------------|------------------------|
| 1 1/4" Pitch (31.75mm) | | | | | | | | |
| AL1022 | 2 x 2 | 11 | 9.53 | 4.09 | 26.00 | 20.50 | 10300 | 101.04 |
| BL1022 | 2 x 2 | 11 | 11.11 | 4.90 | 30.10 | 24.40 | 14400 | 141.26 |
| EL1022 | 2 x 2 | 11 | 10.19 | 3.70 | 26.00 | 19.70 | 9680 | 95.00 |
| BL1023 | 2 x 3 | 1 | 11.11 | 4.90 | 30.10 | 29.30 | 14400 | 141.26 |
| BL1034 | 3 x 4 | 3 | 11.11 | 4.90 | 30.10 | 39.20 | 21600 | 211.89 |
| FLC1034 | 3 x 4 | 4 | 9.53 | 3.20 | 26.00 | 27.60 | 11700 | 114.78 |
| AL1044 | 4 x 4 | 12 | 9.53 | 4.09 | 26.00 | 37.10 | 20600 | 202.08 |
| BL1044 | 4 x 4 | 12 | 11.11 | 4.90 | 30.10 | 44.20 | 28800 | 282.52 |
| EL1044 | 4 x 4 | 12 | 10.19 | 3.70 | 26.00 | 34.70 | 19360 | 190.00 |
| FLC1045 | 4 x 5 | 6 | 9.53 | 3.20 | 26.00 | 33.90 | 15600 | 153.04 |
| BL1046 | 4 x 6 | 5 | 11.11 | 4.90 | 30.10 | 54.10 | 28800 | 282.52 |
| FLC1056 | 5 x 6 | 7 | 9.53 | 3.20 | 26.00 | 40.60 | 19500 | 191.30 |
| AL1066 | 6 x 6 | 13 | 9.53 | 4.09 | 26.00 | 53.60 | 30900 | 303.12 |
| BL1066 | 6 x 6 | 13 | 11.11 | 4.90 | 30.10 | 64.00 | 43200 | 423.78 |
| EL1066 | 6 x 6 | 13 | 10.19 | 3.70 | 26.00 | 49.70 | 29040 | 285.00 |
| XL1066 | 6 x 6 | 13 | 13.74 | 3.96* | 30.15 | 55.88 | 36940 | 362.38 |
| FLC1067 | 6 x 7 | 8 | 9.53 | 3.20 | 26.00 | 47.10 | 23400 | 229.56 |
| EL1078 | 7 x 8 | 9 | 10.19 | 3.70 | 26.00 | 60.30 | 31500 | 309.02 |
| FLC1078 | 7 x 8 | 9 | 9.53 | 3.20 | 26.00 | 53.70 | 27300 | 267.82 |
| AL1088 | 8 x 8 | 14 | 9.53 | 4.09 | 26.00 | 68.70 | 41200 | 404.16 |
| BL1088 | 8 x 8 | 14 | 11.11 | 4.90 | 30.10 | 83.80 | 57600 | 565.04 |
| EL1088 | 8 x 8 | 14 | 10.19 | 3.70 | 26.00 | 64.70 | 38720 | 380.00 |
| XL1088 | 8 x 8 | 14 | 13.74 | 3.96* | 30.15 | 72.14 | 45310 | 444.59 |
| FLC1089 | 8 x 9 | 10 | 9.53 | 3.20 | 26.00 | 59.20 | 31200 | 306.08 |

* NOTE: XL10 chains have an outer plate thickness of 4.75mm compared to inner plates of 3.96mm

| | | | | | | | | |
|------------------------------|-------|----|-------|------|-------|-------|-------|--------|
| 1 1/2" Pitch (38.1mm) | | | | | | | | |
| EL1222 | 2 x 2 | 11 | 14.63 | 5.20 | 33.40 | 27.20 | 17325 | 170.00 |
| BL1223 | 2 x 3 | 1 | 12.70 | 5.77 | 36.20 | 34.20 | 19000 | 186.39 |
| XL1223 | 2 x 3 | 2 | 9.53 | 3.18 | 22.23 | 21.08 | 6350 | 62.28 |
| BL1234 | 3 x 4 | 3 | 12.70 | 5.77 | 36.20 | 45.90 | 28500 | 279.59 |
| XL1234 | 3 x 4 | 4 | 9.53 | 3.18 | 22.23 | 27.43 | 9520 | 93.41 |
| AL1244 | 4 x 4 | 12 | 11.11 | 4.83 | 30.50 | 43.80 | 27720 | 271.94 |
| BL1244 | 4 x 4 | 12 | 12.70 | 5.77 | 36.20 | 51.70 | 38000 | 372.78 |
| EL1244 | 4 x 4 | 12 | 14.63 | 5.20 | 33.40 | 48.20 | 34650 | 340.00 |
| LC1244 | 4 x 4 | 12 | 13.42 | 5.13 | 30.60 | 46.30 | 34650 | 340.00 |
| WL1244U | 4 x 4 | 12 | 14.63 | 5.00 | 33.40 | 53.20 | 36075 | 354.00 |
| XL1244 | 4 x 4 | 12 | 13.34 | 4.75 | 31.75 | 44.20 | 21000 | 206.00 |
| XL1244L | 4 x 4 | 12 | 13.34 | 5.08 | 31.75 | 46.74 | 22665 | 222.40 |
| XL1245 | 4 x 5 | 6 | 9.53 | 3.18 | 22.23 | 33.78 | 12700 | 124.60 |
| BL1246 | 4 x 6 | 5 | 12.70 | 5.77 | 36.20 | 63.30 | 38000 | 372.78 |
| XL1256 | 5 x 6 | 7 | 13.34 | 5.08 | 31.75 | 62.48 | 45100 | 442.59 |
| AL1266 | 6 x 6 | 13 | 11.11 | 4.83 | 30.50 | 62.90 | 41580 | 407.91 |
| BL1266 | 6 x 6 | 13 | 12.70 | 5.77 | 36.20 | 75.00 | 57000 | 559.17 |
| EL1266 | 6 x 6 | 13 | 14.63 | 5.20 | 33.40 | 69.20 | 51975 | 510.00 |
| LC1266 | 6 x 6 | 13 | 13.42 | 5.13 | 30.60 | 67.10 | 45860 | 450.00 |
| WL1266U | 6 x 6 | 13 | 14.63 | 5.00 | 33.40 | 75.20 | 55030 | 540.00 |
| XL1266 | 6 x 6 | 13 | 13.34 | 4.75 | 31.75 | 62.99 | 31590 | 310.00 |
| XL1266L | 6 x 6 | 13 | 13.34 | 5.08 | 31.75 | 67.31 | 34000 | 333.60 |
| AL1288 | 8 x 8 | 14 | 11.11 | 4.83 | 30.50 | 82.50 | 55440 | 543.88 |
| BL1288 | 8 x 8 | 14 | 12.70 | 5.77 | 36.20 | 98.20 | 76000 | 745.56 |
| EL1288 | 8 x 8 | 14 | 14.63 | 5.20 | 33.40 | 90.20 | 69300 | 680.00 |
| WL1288U | 8 x 8 | 14 | 14.63 | 5.00 | 33.40 | 94.20 | 71330 | 700.00 |
| XL1288 | 8 x 8 | 14 | 13.34 | 5.08 | 31.75 | 88.01 | 65730 | 645.00 |

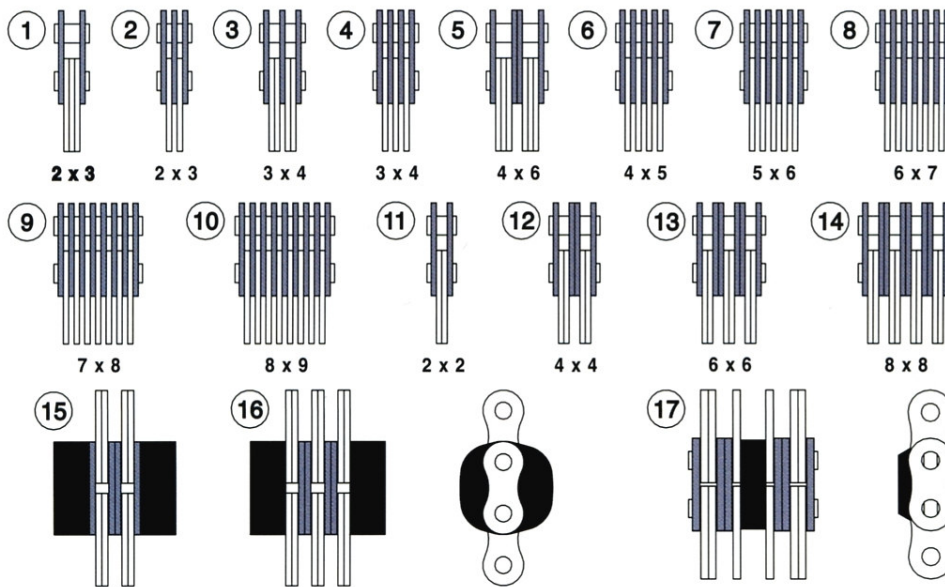
| | | | | | | | | |
|-------------------------------|-------|----|-------|------|-------|-------|-------|--------|
| 1 3/4" Pitch (44.45mm) | | | | | | | | |
| BL1423 | 2 x 3 | 1 | 14.29 | 6.40 | 42.00 | 38.40 | 22000 | 215.82 |
| BL1434 | 3 x 4 | 3 | 14.29 | 6.40 | 42.00 | 51.60 | 33000 | 323.73 |
| AL1444 | 4 x 4 | 12 | 12.70 | 5.61 | 35.60 | 50.80 | 37100 | 363.96 |
| BL1444 | 4 x 4 | 12 | 14.29 | 6.40 | 42.00 | 58.20 | 44000 | 431.64 |
| EL1444 | 4 x 4 | 12 | 15.90 | 6.45 | 36.40 | 58.80 | 40760 | 400.00 |
| BL1446 | 4 x 6 | 5 | 14.29 | 6.40 | 42.00 | 71.40 | 44000 | 431.64 |
| AL1466 | 6 x 6 | 13 | 12.70 | 5.61 | 35.60 | 73.60 | 55650 | 545.94 |
| BL1466 | 6 x 6 | 13 | 14.29 | 6.40 | 42.00 | 84.60 | 66000 | 647.46 |
| EL1466 | 6 x 6 | 13 | 15.90 | 6.45 | 36.40 | 84.80 | 61140 | 600.00 |

| | | | | | | | | |
|--------------------------|---------|---------|-------|------|-------|--------|--------|---------|
| 2" Pitch (50.8mm) | | | | | | | | |
| EL1622 | 2 x 2 | 11 | 17.80 | 6.35 | 41.00 | 35.00 | 26500 | 260.00 |
| BL1623 | 2 x 3 | 1 | 17.46 | 7.20 | 48.20 | 43.80 | 33000 | 323.73 |
| BL1634 | 3 x 4 | 3 | 17.46 | 7.20 | 48.20 | 58.60 | 49500 | 485.60 |
| AL1644 | 4 x 4 | 12 | 14.24 | 6.43 | 40.70 | 57.80 | 47080 | 461.86 |
| BL1644 | 4 x 4 | 12 | 17.46 | 7.20 | 48.20 | 66.10 | 66000 | 647.46 |
| EL1644 | 4 x 4 | 12 | 17.80 | 6.35 | 41.00 | 61.00 | 53000 | 520.00 |
| WL1644 | 4 x 4 | 12 | 17.81 | 6.00 | 43.00 | 54.50 | 54010 | 530.00 |
| WL1644U | 4 x 4 | 12 | 17.81 | 6.00 | 43.00 | 60.20 | 54010 | 530.00 |
| XL1644 | 4 x 4 | 12 | 20.32 | 7.14 | 47.63 | 73.66 | 68000 | 667.20 |
| BL1646 | 4 x 6 | 5 | 17.46 | 7.20 | 48.20 | 80.70 | 66000 | 647.46 |
| AL1666 | 6 x 6 | 13 | 14.24 | 6.43 | 40.70 | 83.70 | 70620 | 692.79 |
| BL1666 | 6 x 6 | 13 | 17.46 | 7.20 | 48.20 | 96.40 | 99000 | 971.19 |
| EL1666 | 6 x 6 | 13 | 17.80 | 6.35 | 41.00 | 87.00 | 79500 | 780.00 |
| WL1666 | 6 x 6 | 13 | 17.81 | 6.00 | 43.00 | 80.50 | 81520 | 800.00 |
| WL1666U | 6 x 6 | 13 | 17.81 | 6.00 | 43.00 | 87.20 | 81520 | 800.00 |
| XL1666 | 6 x 6 | 13 | 20.32 | 7.14 | 47.63 | 103.38 | 95185 | 934.10 |
| AL1688 | 8 x 8 | 14 | 14.24 | 6.43 | 40.70 | 109.60 | 94160 | 923.72 |
| BL1688 | 8 x 8 | 14 | 17.46 | 7.20 | 48.20 | 128.50 | 132000 | 1294.92 |
| EL1688 | 8 x 8 | 14 | 17.80 | 6.35 | 41.00 | 113.00 | 106000 | 1040.00 |
| WL1688 | 8 x 8 | 14 | 17.81 | 6.00 | 43.00 | 105.50 | 107000 | 1050.00 |
| WL1688U | 8 x 8 | 14 | 17.81 | 6.00 | 43.00 | 111.20 | 107000 | 1050.00 |
| XL1688 | 8 x 8 | 14 | 20.32 | 7.14 | 47.63 | 133.10 | 126870 | 1245.00 |
| WL161010U | 10 x 10 | special | 17.81 | 6.00 | 43.00 | 135.00 | 135530 | 1330.00 |



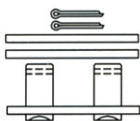
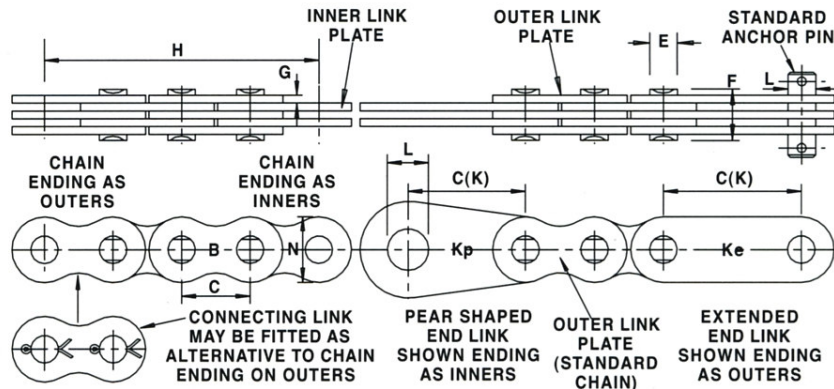
| Chain Number | Lacing | Lacing Style | Pin Diameter mm (max) | Plate Thickness mm (max) | Plate Depth mm (max) | Pin Length mm (max) | Breaking Strength (kg) | Breaking Strength (kN) |
|------------------------------|---------|--------------|-----------------------|--------------------------|----------------------|---------------------|------------------------|------------------------|
| 2 1/2" Pitch (63.5mm) | | | | | | | | |
| EL2044 | 4 x 4 | 12 | 22.87 | 8.00 | 48.50 | 77.90 | 73400 | 720.00 |
| WL2044U | 4 x 4 | 12 | 22.89 | 8.00 | 52.00 | 81.20 | 86110 | 845.00 |
| BL2046 | 4 x 6 | 5 | 23.81 | 9.91 | 60.33 | 111.50 | 92800 | 910.36 |
| AL2066 | 6 x 6 | 13 | 19.84 | 8.00 | 58.80 | 110.20 | 104550 | 1025.64 |
| BL2066 | 6 x 6 | 13 | 23.81 | 9.91 | 60.33 | 131.40 | 139200 | 1365.54 |
| EL2066 | 6 x 6 | 13 | 22.87 | 8.00 | 48.50 | 111.10 | 110100 | 1080.00 |
| WL2066U | 6 x 6 | 13 | 22.89 | 8.00 | 52.00 | 112.20 | 129420 | 1270.00 |
| EL2088 | 8 x 8 | 14 | 22.87 | 8.00 | 48.50 | 144.30 | 146800 | 1440.00 |
| WL2088U | 8 x 8 | 14 | 22.89 | 8.00 | 52.00 | 146.00 | 172215 | 1690.00 |
| 3" Pitch (76.2mm) | | | | | | | | |
| EL2444 | 4 x 4 | 12 | 29.22 | 10.00 | 60.00 | 97.40 | 114140 | 1120.00 |
| EL2466 | 6 x 6 | 13 | 29.22 | 10.00 | 60.00 | 138.90 | 171210 | 1680.00 |
| XL2488 | 8 x 8 | 14 | 34.67 | 7.14 | 73.03 | 160.02 | 187700 | 1842.00 |
| XL241010 | 10 x 10 | special | 34.67 | 7.14 | 73.03 | 189.61 | 238650 | 2342.00 |

Lacing Style



If when ordering the chain, the standard or manufacturer's reference number is not known, the following information will greatly assist in ensuring correct chain identification.

- A Make and model of lift truck
- B Link markings/reference numbers etc.
- C Pitch of chain measured on OUTER LINK
- D Link plate lacing (see chart)
- E Rivet pin diameter (see note 2)
- F Rivet pin length
- G Plate thickness
- H Chain length in pitches
- J Chain finishing inners / outers
- K Details of any special end links
- L Anchor pin diameter (see note 2)
- M Anchor pin grip length
- N Plate height



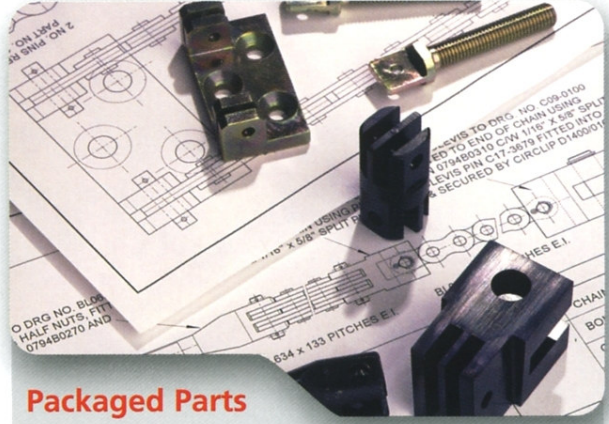
Connecting link supplied with appropriate number of plates to suit chain type

- Note 1. All dimensions should be checked by micrometer or vernier caliper.
- Note 2. Some special end links have anchor pin diameters different to rivet pin diameters.
- Note 3. Our technical department will be pleased to discuss any special chain requirement.



Chain Anchors, Pulleys & Pins

These safety critical parts are manufactured in the UK by FB Engineering. The latest manufacturing techniques ensure the highest level of product quality and provides complete peace of mind.



Packaged Parts

Experienced design and production engineers are able to assist with cost effective package solutions. This free in-house design service saves customers' valuable time and money.



Chain Wear Gauge

This patented Professional Gauge is widely recognised as the industry standard design for measuring chain elongation. Its ease of use ensures accurate results each and every time.



Roller Chain

Noted for its increased fatigue strength and superior tensile strength this high performance chain continues to provide dependable service under the toughest operating conditions.



Conveyor Chain

Manufactured in Finland by FB's sister company FB Ketjuteknikka these chains feature robotic assembly and welding and can be specified for the most demanding applications.

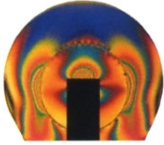


Sharp Top Chain

Manufactured in Sweden by FB's sister company FB Kedjor these high quality chains have been developed using their extensive knowledge of the arduous nature of the wood industry.

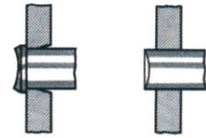
The FB Chain philosophy – “To provide high quality products at competitive prices with superior customer service and full technical back-up” – FB is recognised as the first choice supplier of leaf chain and associated safety critical parts.

The quality and consistency of FB leaf chain is assured by adherence to the FB Specification.



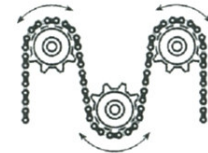
The specialist steel used by FB is selected to withstand high shock loads following heat treatment whilst maintaining high basic core strength and durability.

All FB chain features re-punched linkplates so that the resultant holes are both accurate and parallel. This not only reduces wear by lowering bearing pressure but increases fatigue life.



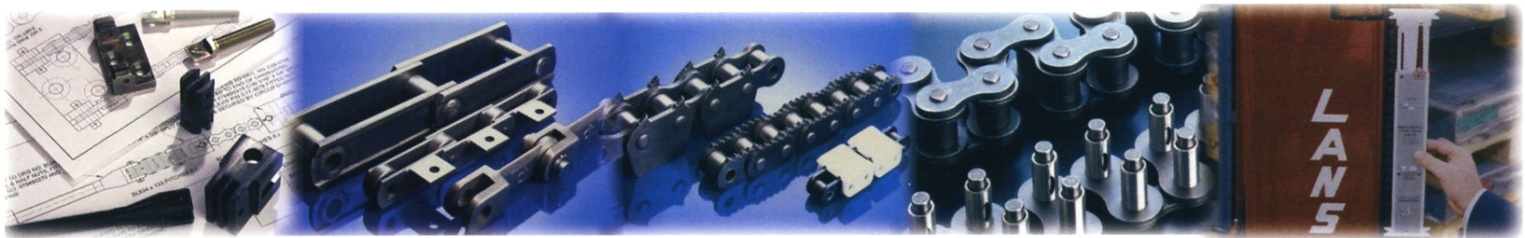
Following heat treatment all FB components are subjected to shot peening which removes surface blemishes and fortifies them against fatigue.

Automatic assembly and pre-stressing of FB chain ensures correct seating of component parts and adherence to their specification. This results in reduced chain wear and greater peace of mind.



Full batch traceability ensures strict compliance to the FB manufacturing and testing procedures. Customers have complete confidence in FB quality and consistency.

Quality & Consistency



FB

FB CHAIN Limited

Jubilee Road, Letchworth Garden City, Herts. SG6 1NE

Tel: +44(0)1462 670844 Fax: +44(0)1462 480745

sales@fbchain.com www.fbchain.com